



## KMAN AIRPORT DISPATCH

DECEMBER 2019

**Happy Holidays!** Thank you for choosing to base your aircraft at the Nampa Municipal Airport. Our small airport staff works hard to maintain a safe, friendly and efficient facility for aircraft operations. We strive to maintain a sense of community where pilots and tenants exercise mutual respect. Please be neighborly and respect the rights and property of others using the airport.

Feel free to drop by our office anytime to say hello, ask questions, or to express any concerns you may have.

### SECURITY

- One vehicle through the gate at a time. Do not follow or allow vehicles to follow through a gate.
- Maintain gate code confidentiality, do not give the gate code to non-tenants.
- **Hangar owners**; please check your hangar exterior security lighting regularly and replace burned out bulbs.
- **Hangar renters and others**; please notify Airport Administration if you notice inoperative security lighting.

### AIRPORT RULES & REGULATIONS

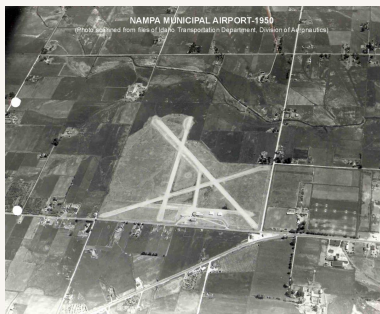
There are a few airport regulations that we would like to remind you of.

- No aircraft may take off or land except on Runway 11-29.
- Runway 11 is the calm wind runway.
- Limit use of personal vehicles or ATV's on the airport.
- Dogs must be on a leash when on the airport.
- There is no smoking or alcohol use allowed in public areas.

The Airport Rules & Regulations and Minimum Standards are available on our website:

<https://www.cityofnampa.us/388/Policy>

We encourage all of our Airport users to review both the Rules & Regulations and Minimum Standards for the Nampa Municipal Airport.



The Nampa Municipal Airport in 1950

## HANGAR USE

---

- No living in your hangar. **FAA policy strictly forbids residential use of a hangar.**
  - Hangars are for storing aircraft.
  - Limited non-aviation hangar use. *Per FAA policy*, if a hangar is serving its primary purpose, **unimpeded storage of aircraft**, the limited storage of non-aeronautical items in the hangar that does not interfere with the primary aeronautical purpose of the hangar is acceptable. If you are unsure about your non-aviation storage, give us a call.
  - Maintain clearance in the Object Free Area (OFA). This is the area in between your hangar and the center line of the taxilane. Park your vehicle in a manner to allow unimpeded aircraft movement on taxilanes.
  - **No exterior storage is allowed.** This includes automobiles, ATV's, trailers or RV's.
- 

## BASED AIRCRAFT

---

Airport users are to provide Airport Administration a current list of all based aircraft. FAA funding is dependent on accurate and current aircraft counts. The list should include: Aircraft registration number, make/model, Aircraft owner name and phone number.

There are several ways to send your updates to Airport Administration

- Online at [www.flynampa.us](http://www.flynampa.us) there is a link to update your N number
- Email us at [airport@cityofnampa.us](mailto:airport@cityofnampa.us)
- Fax: 208-442-2787
- By mail: Airport Administration  
116 Municipal Drive  
Nampa, Idaho 83687

## HANGAR OWNERS - LIABILITY INSURANCE

---

We recognize your hangar is a considerable investment and our staff works hard to protect your investment at our airport.

Per your land lease: Liability Insurance-Lessee is to maintain a comprehensive liability insurance policy covering your leased premises in the minimum amount of \$500,000.00 each occurrence \$1,000,000.00 aggregate. Please submit your insurance binder to Airport Administration annually. If you are unsure if we have your current binder give us a call at 208-468-5823.

---

**116 Municipal Drive**  
Nampa, Idaho 83687  
208-468-5823

### Office Hours

Monday - Thursday 8:00 am - 5:00 pm  
Friday 8:00 am - 12:00 pm